

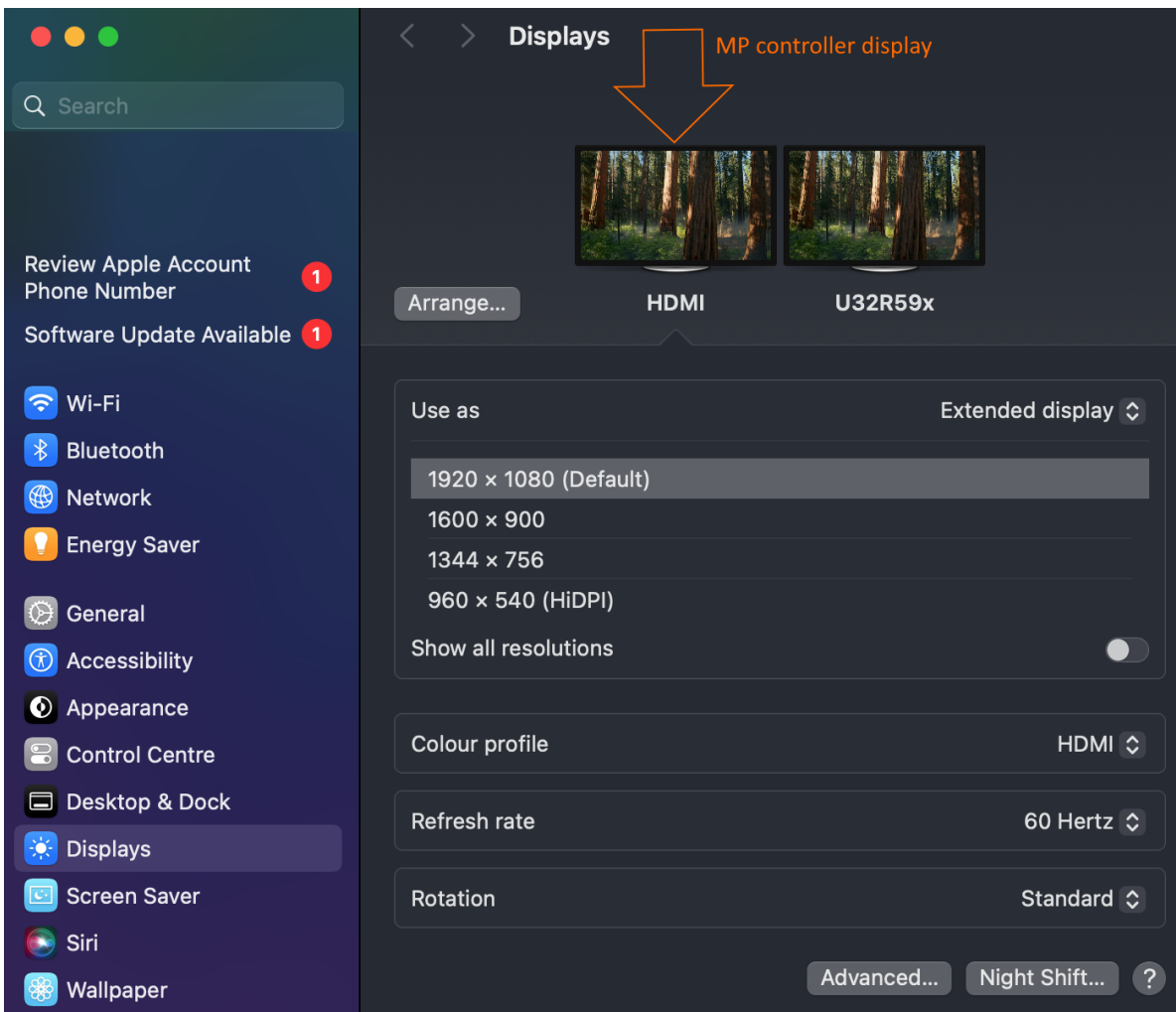
1. Mac - Display and Touch Setup

Display configuration on the Mac (all models)

The resolution of the monitor should be set to 1920 x 1080.

If it is not set automatically by the OS, you can set it manually under Settings > Displays.

Set the monitor as an external display in Displays on the Mac. (not mirror). System Settings > Displays. Use As: Extended Display



The monitor frequency should be automatically set to 60Hz.

In some cases, the Mac OS may set it to 75Hz and this will cause the display to not be able to show any video. The refresh rate settings on MacOS are hidden — In Display Settings, be sure to hold the Option key when clicking "Scaled" to see the refresh rate option.

How to disable the Mac top bar on the MP Controller display

System Preferences > Mission Control. Displays Have Separate Spaces will be selected. Simply deselect. See in detail [here](#)

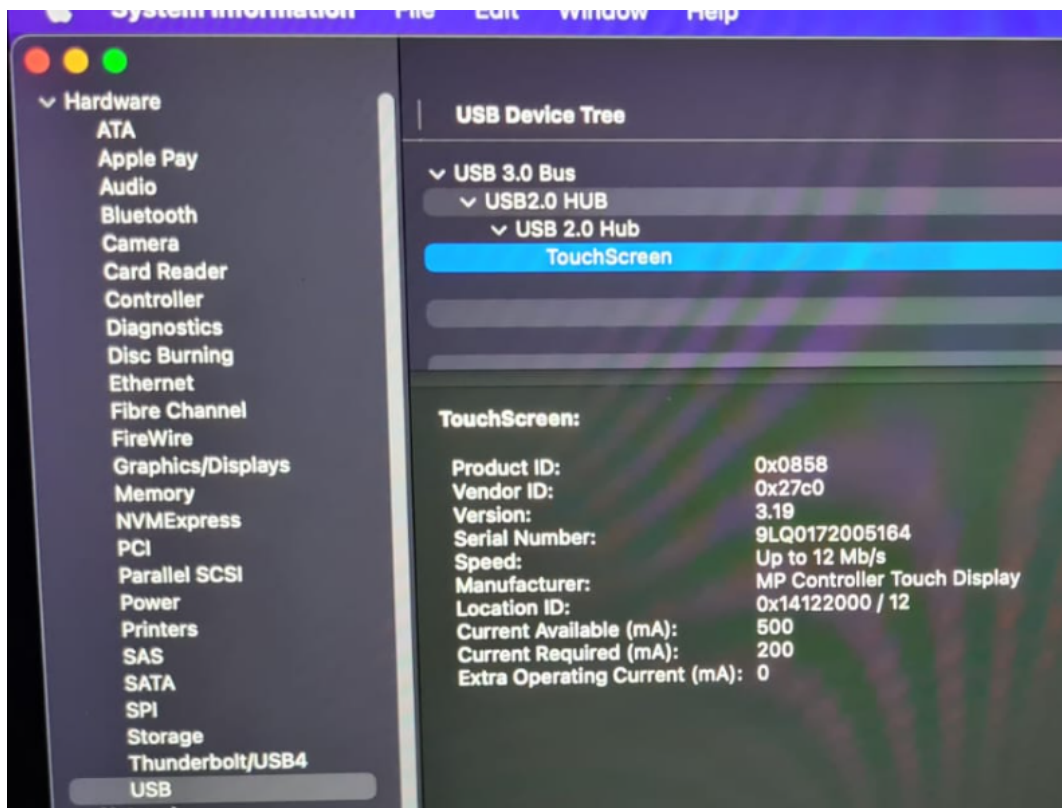
Reveal All Possible Screen Resolutions for a Display Connected to a Mac

- Open System Preferences from the Apple menu in Mac OS X
- Click on “Display”
- Under the ‘Display’ tab, hold down the OPTION / ALT key while you press on the ‘Scaled’ button alongside Resolution to reveal all available screen resolution options for the display
- Choose the resolution desired from the complete list of available screen resolutions, then close out of System Preferences as usual

See in more details in this article [here](#)

Model 1A+/2A Touch Function

The TouchScreen should show in the System Report under USB



If it does not show up in the System Report, it is due to a connection issue.

Connect the USB-A to USB-C cable provided directly on the Mac. (not through a hub or docking station or the Y-cable) and reopen the System Report.

For further troubleshooting see [here](#).

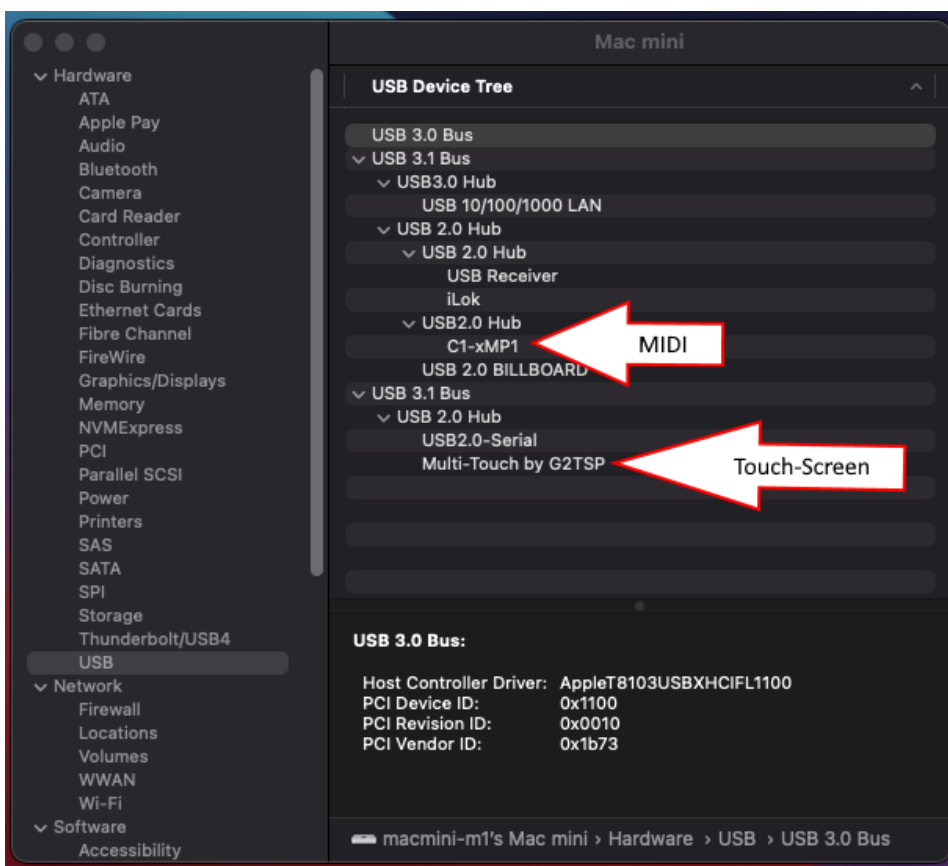
If the touch works but affects your other display, then you need to move the mouse pointer to the MP Controller display. This can be done automatically when you touch the MP Controller display instead of manually having to move the cursor by using [UPDD](#).

Additionally, [here](#) are some other utilities that can move the mouse cursor to other displays.

Model 1A Touch Function

The Touch hardware shows as "Multi-Touch by G2TSP" in the System Report.

UPDD is required for touch functionality on MacOS Catalina and later for Model 1A. See [here](#)



If it does not show up in the System Report, it is a connection issue. Connect the cable provided directly on the Mac (not through a hub or docking station or the Y-cable) and reload the System Report.

Using a stylus with the touchscreen:

The touch screen does not work a stylus but it does work with pens that have a rubber tip.

These are Capacitive Stylus Pens, [as this one](#)

Revision #5

Created 24 April 2025 16:36:47 by Admin

Updated 10 December 2025 14:50:13 by Admin