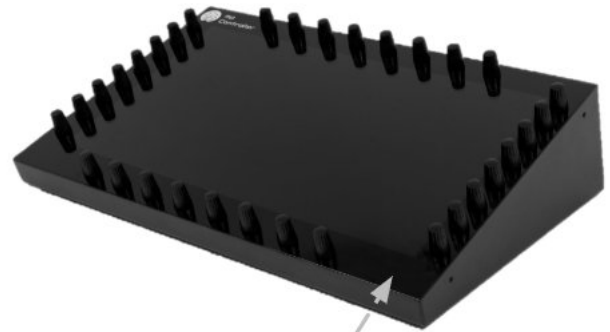


# 11. Using the Remote Control

Point the remote control to the IR receiver of the unit and press the power button on the remote control.



Here is how to check that the remote control is working properly.  
The remote control light is infrared and can't be seen.  
Go into a relatively dark room and open your mobile/cell phone camera.  
Point the remote to the camera, and press a button on the remote control.  
You would see a light blinking in the camera.  
See instructional video [here](#)

Revision #1

Created 14 February 2026 04:33:31 by Admin

Updated 14 February 2026 04:34:12 by Admin